

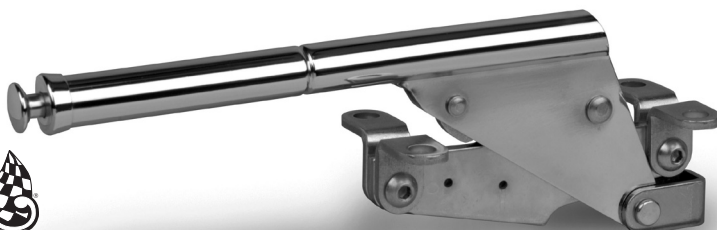
**FEATURED ITEMS IN BRAKES**



**Stainless Straight Line Set - Thru Frame**

This set comes with 30 feet of tubing, 18 line fittings, 2 pipe elbows, 2 pipe tees, 2 master cylinder fittings, 5 valve fittings, spring wrap, and line clamps. This set is designed for a 45° double flare. For use with thru frame fittings.

- |          |   |                 |
|----------|---|-----------------|
| ITSLS    | Stainless Line Set w/ chrome and stainless fittings | <b>\$145.00</b> |
| ITSLS-04 | Tin Coated Line Set w/ brass fittings               | <b>\$ 60.00</b> |



**Floor Mount Emergency Hand Brake and Cable Package**

This floor mount emergency hand brake is chromed steel and designed after the auto industry specifications. Comes complete with clevis for installation and Lokar E-Brake cables.



- |              |                               |                 |
|--------------|-------------------------------|-----------------|
| LKEHB-7000F  | 10" Brake only                | <b>\$105.00</b> |
| LKEHB-7000FB | 10" Brake w/ black cables     | <b>\$210.00</b> |
| LKEHB-7000FS | 10" Brake w/ stainless cables | <b>\$260.00</b> |



### Floor Mount Hand Brake

This stainless steel hand brake with compact design can be placed in almost any location in your vehicle.  
*For use with UN1 or UN2 brake cables.*

GS2003 \$99.00



### Transmount Emergency Hand Brake

This chromed steel hand brake mounts off the side of Lokar shifters only. For use with Lokar cables (pictured on previous page), sold separately and listed below.



LKEH-7011 11" Transmount E-Brake \$128.00  
 LKEH-7016 16" Transmount E-Brake \$128.00

### Available Lokar Cables

LKEC-80FU	Universal E-Brake Cable (Black)	\$115.00
LKEC-80FHT	Universal E-Brake Cable (Stainless)	\$168.00
LKEC-80TU	Transmount E-Brake Cable (Black)	\$115.00
LKEC-80THT	Transmount E-Brake Cable (Stainless)	\$168.00
LKEC-81TU	Ford Explorer Transmount (Black)	\$115.00
LKEC-81THT	Ford Explorer Transmount (Stainless)	\$168.00



### Emergency Brake Cable

For use with Gennie Shifter floor mount hand brakes and other universal applications. Each kit comes with 9 feet of cable x 2.

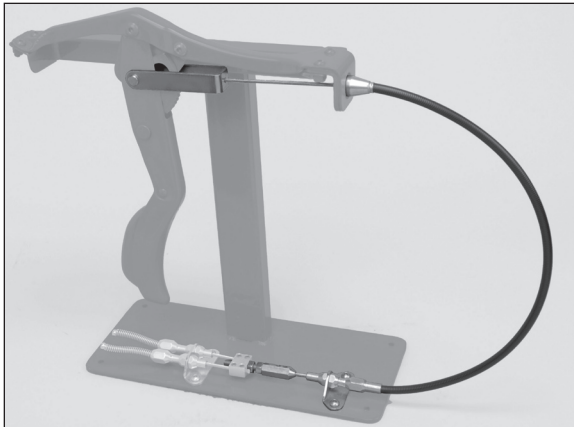
GS 2008 UN2	\$109.95
<i>For Drum Brakes. Fits Universal Design</i>	
GS2009 UN1	\$59.95
<i>For Jag Rears. Fits Universal Design</i>	
GS2010	\$59.95
<i>Connector Cable for stock handles to GS2008</i>	

### Rear Brake Clevis Kits

Lokar Clevis Kits adapt Lokar E-Brake cable kits for disc brake applications.



LKEC-80WC	\$22.00
Wilwood Clevis Kit <i>(Old style Wilwood rears, '88 and later Corvette)</i>	
LKEC-80CC	\$28.00
Corvette Clevis Kit <i>('84-'87 Corvette)</i>	
LKEC-81FC	\$28.00
Ford Explorer Clevis Kit <i>(New style Wilwood)</i>	



**Connector Cables for Original Factory Under-Dash Hand Operated E-Brakes**

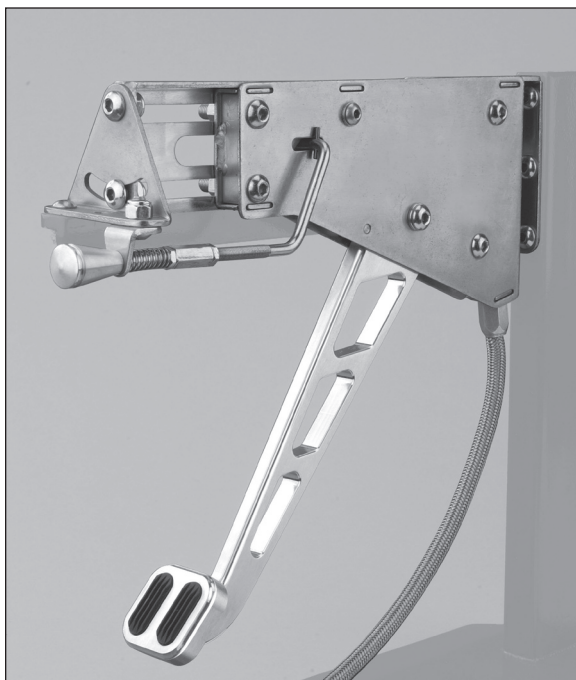
Connects Lokar's Universal E-Brake Cables to your stock under-dash hand brake. Kit includes a single 6' outer housing with a 7' stainless steel inner cable.

**Black Housing Options**

LKEC-8000U	'37-'48 Ford Car	<b>\$70.00</b>
LKEC-8000U	'37-'56 Ford Truck	<b>\$70.00</b>
LKEC8002U	'38-'48 Ply/Dodge	<b>\$70.00</b>
LKEC-8003U	'39-'48 Chevy	<b>\$70.00</b>

**Stainless Housing Options**

LKEC-8000HT	'37-'48 Ford Car	<b>\$102.00</b>
LKEC-8000HT	'37-'56 Ford Truck	<b>\$102.00</b>
LKEC-8002HT	'38-'48 Ply/Dodge	<b>\$102.00</b>
LKEC-8003HT	'39-'48 Chevy	<b>\$102.00</b>



**Under-Dash Foot Operated E-Brake**

This easy to operate, out-of-the-way E-brake is adjustable 9" to 13" from firewall to dash, and comes complete with all instructions and hardware. Requires connector cables, sold separately (LKEC-8001U or LKEC8001HT recommended, see below).

**Billet Aluminum Brake Options**

LKEFB-9000	w/ Ball Milled Pad	<b>\$198.00</b>
LKEFB-9001	w/ Rubber insert	<b>\$198.00</b>
LKEFB-9002	w/ Windowed Arm & Ball Milled Pad	<b>\$198.00</b>
LKEFB-9003	w/ Windowed Arm & Rubber insert	<b>\$198.00</b>

**Chromed Billet Aluminum Brake Options**

LKEFB-9004	w/ Ball Milled Pad	<b>\$250.00</b>
LKEFB-9005	w/ Rubber insert	<b>\$250.00</b>
LKEFB-9006	w/ Windowed Arm & Ball Milled Pad	<b>\$250.00</b>
LKEFB-9007	w/ Windowed Arm & Rubber insert	<b>\$250.00</b>

**Connector Cables for Foot Operated E-Brakes**

LKEC-8001U	6' Cable w/ Black Housing	<b>\$70.00</b>
LKEC-8001HT	6' Cable w/ Stainless Housing	<b>\$105.00</b>





### Thru-Frame Fittings

Made of stainless steel and sold in pairs.



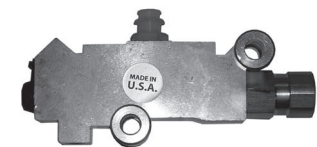
BS66210S Short 2" Fittings \$30.00

BS66210L Long 2 3/8" Fittings \$30.00

### Sun Specs Fittings

SUN1502 Polished 2" Fittings \$40.00

SUN1503 Polished 2.5" Fittings \$45.00



**Proportioning Valve**  
Specify Disc-Disc or Disc-Drum when ordering.

PVB Brass Valve \$89.00



### Brake Light Switch

Low pressure switch activates your brake lights when the brakes are applied. **BTSH203K \$19.95**

### Residual Valves



BTSV702K \$25.00

2 lb. PSI Valve Disc Blue

BTSV710K \$25.00

10 lb. PSI Valve Drum Red



### Adjustable Proportioning Valve



W260-8419 \$42.00



### Brake Hose Threaded Adapters

ITHLF-04 \$10.00 each

OEM

ITHLF-05 \$12.00 each

Stainless

### Adjustable Lever Brake Switch

This lever switch is "hinged" for more adjustment and is mounted under the floor near the brake pedal. High quality hardware included.



RFWSW-68

\$26.95

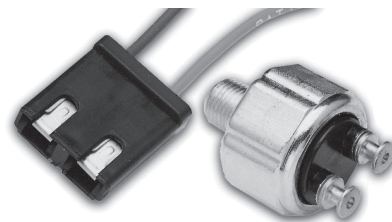
## RON FRANCIS WIRING

### Low Pressure Hydraulic Brake Light Switch

This high quality switch

fits most cars, with 20-50 lbs.

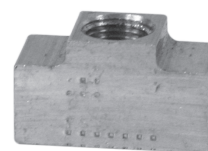
pressure required instead of stock units that don't come on until 60-120 lbs. pressure. Standard 1/8" pipe thread and is compatible with silicone brake fluid. Requires use of a brake line tee.



RFWSW-32

\$26.95

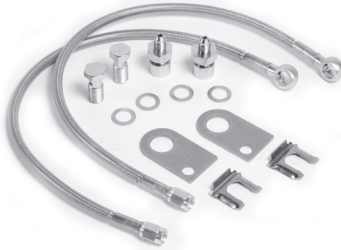
### Brake Line Tee



RFWBL-18

\$13.95

**Stainless Steel Braided Front Brake Hose Kit**



*Front brake kits* include two 18" hoses, two banjo bolts, four washers, two line adapters, two clips, and two tabs.

BHKF-77	GM '77 and earlier	<b>\$65.00</b>
BHKF-78	GM '78 and later	<b>\$65.00</b>

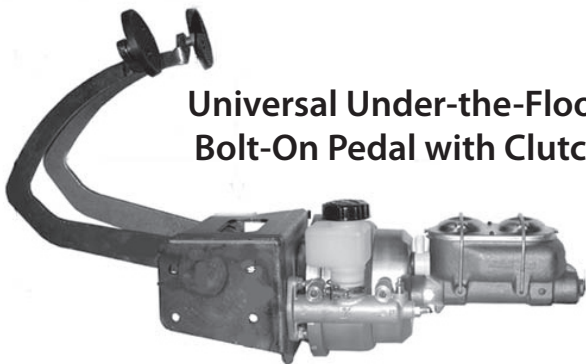
*Standard Rear kit* includes an 18" hose with a tee, line adapter, and clip.

BHKR	Standard rear kit	<b>\$65.00</b>
BH	18" Brake hose only	<b>\$17.00</b>

**Direct Fit Pedal Kits**

Direct Fit pedal kits are available for many popular years and makes. Most kits include a new 7" dual booster, master, pedal, mounting bracket, and hardware, starting at \$375.00. Call 704-483-3300 for details.

**Universal Under-the-Floor Bolt-On Pedal with Clutch**



This kit comes with a new 7" dual booster and master, a hydraulic clutch, pedal assembly, and necessary hardware. BTSPK202 **\$499.95**

**Universal Firewall Mounted Pedal**



This kit allows you to locate the pedal pivot from 7" to 13" from the firewall. Kit comes with a new booster, master, hanging pedal, and necessary hardware.

BTSPK200 **\$369.95**

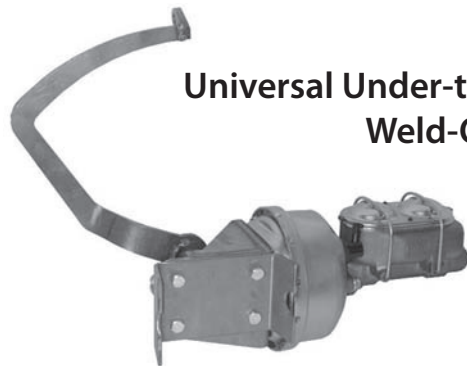
**Universal Firewall Mounted Pedal with Clutch**



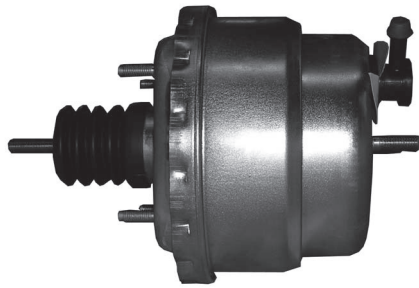
This kit allows you to locate the pedal pivot from 4.5" to 13" from the firewall. Kit comes with a new booster, master, hanging pedal with clutch, and necessary hardware.

BTSPK201 **\$469.95**

**Universal Under-the-Floor Weld-On Pedal**

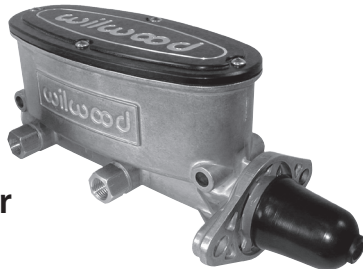


This kit comes with a new booster and master, pedal assembly, and necessary hardware. BTSPK502 **\$325.00**



**Dual Diaphragm Booster**

BTSDB7-G	7" Gold Booster	\$155.00
BTSDB7-C	7" Chrome Booster	\$220.00

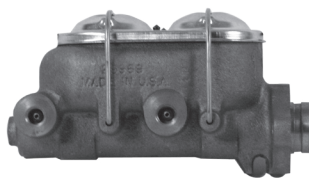


**Aluminum Tandem Chamber Master Cylinder**

High-pressure die casting of a premium alloy produces a high-capacity body with a black anodized, machined billet lid that captures a pressure balanced bellows gasket with 100% sealing against moisture invasion or fluid leakage. The mounting flange is slotted to accommodate installation on bolt centers between 3.22" and 3.40". Please specify 1" or 1 1/8" bore.

WMC	Plain Finish	\$200.00
WMCB	Bright Finish	\$240.00

**Master Cylinders Made in the USA**



	Gold	Chrome
MCMB1 <i>1" BORE manual disc/drum brake</i>	\$89.00	\$155.00
MCMB118 <i>1 1/8" BORE manual disc/disc brake</i>	\$119.00	\$175.00
MCPB1 <i>1" BORE power disc/drum brake</i>	\$89.00	\$155.00
MCPB118 <i>1 1/8" BORE power disc/disc brake</i>	\$119.00	\$175.00



**Super Stopper Brake Kits**

The Super Stopper Brake Kits come standard with 4-piston calipers, an aluminum hub, and 360° polished backing plate. A polished finned backing plate is also available. Many rotor sizes available. Call for more info.



PJ1111P	Kit w/ Black calipers	\$945.00
PJ1111	Kit w/ Polished calipers	\$1025.00
PJ1130	Finned Backing Plate Cast	+\$270.00
PF1130P	Fin. Backing Highlight Polish	+\$388.00

Brakes



**Basic Brake Kits**



Super Bell's Basic Brake Kit adapts most '78-'86 intermediate passenger car GM calipers and rotors to '37-'48 Ford passenger car spindles.

PJ1125K	Complete 5" x 4 3/4" Chevy Kit	\$395.00
PJ1125AK	Complete 5" x 4 1/2" Ford Kit	\$395.00



**Rear Disc Brake Kits**



<b>Polished Calipers, Smooth Rotors</b>	
WRD-P	\$655.00
WRDE-P <i>w/ internal parking brake</i>	\$745.00
<b>Black Calipers, Smooth Rotors</b>	
WRD-B	\$550.00
WRDE-B <i>w/ internal parking brake</i>	\$640.00
<b>Polished Calipers, Drilled &amp; Slotted Rotors</b>	
WRD-PD	\$755.00
WRDE-PD <i>w/ internal parking brake</i>	\$845.00
<b>Black Calipers, Drilled &amp; Slotted Rotors</b>	
WRD-BD	\$650.00
WRDE-BD <i>w/ internal parking brake</i>	\$740.00
<b>GM Calipers, Smooth Rotors</b>	
WRD-GM	\$499.00
WRDE-GM <i>w/ internal parking brake</i>	\$600.00

**Mustang II Disc Brake Conversion Kits**



These kits use 11" rotors with a variety of caliper combinations for Mustang II spindles. GM kit uses '73-'76 Chevelle rotors (4 3/4" BC) and '78-'84 Chevelle calipers.

HTDF-201-C	GM Complete Kit	\$349.00
HTDF-201-C	Ford Complete Kit	\$349.00

**Currie Ford 9" Rear Drum Brake Kits**



Includes loaded backing plate and new drums. Please specify rear end bearing size used when ordering.

CURF9RDBK \$359.95

**Wilwood Polished Billet Disc Brake Kits**

11" or 12" Kit with billet 4-piston calipers, polished aluminum hubs, optional crossdrilled & slotted rotors.



W11FD-P	\$799.00
<i>11" Polished Billet Complete Kit</i>	
W11FD-PD	\$899.00
<i>11" w/ Polished Calipers and Crossdrilled Rotors</i>	
W11FD-B	\$699.00
<i>11" w/ Black Anodized Calipers</i>	
W12FD-B	\$775.00
<i>12" w/ Black Anodized Calipers</i>	
W12FD-P	\$875.00
<i>12" w/ Polished Calipers</i>	
W12FD-PD	\$975.00
<i>12" w/ Polished Calipers and Crossdrilled Rotors</i>	



**Big Brake Kits**

Enjoy the power of Wilwood 6-piston calipers installed on huge 13" directional vented rotors.



W13FD-B	\$1,650.00
<i>w/ Black Anodized Calipers</i>	
W13FD-P	\$1,750.00
<i>w/ Polished Calipers</i>	